



**LAVORI DI RISTRUTTURAZIONE CONSERVATIVA
DEL FABBRICATO GUARDIA MEDICA IN VIA S. LUCIA,
NEL COMUNE DI SAN GAVINO MONREALE**

 **ASL Sanluri**

**RESPONSABILE UNICO
DEL PROCEDIMENTO**
Geom. GIUSEPPE BOTTA

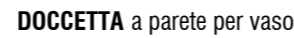
Ing. Gianni FOIS

PROGETTO ESECUTIVO

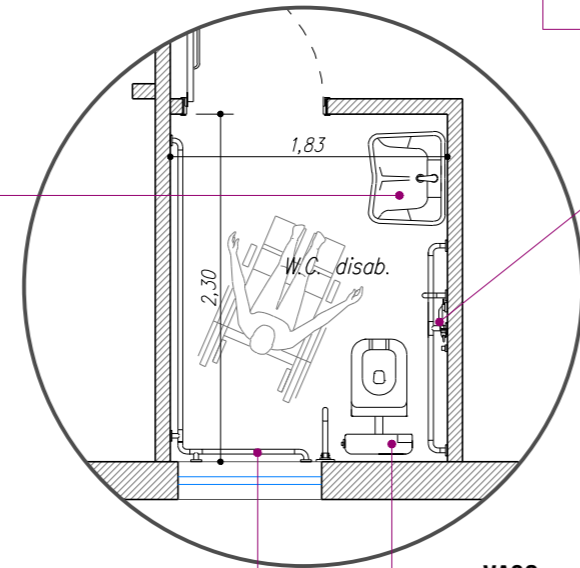
TAVOLA 05

REV. N° 1	DEL
REV. N° 2	DEL
REV. N° 3	DEL
AGG.	DEL

FASE: ESECUTIVA



LAVABO ad altezza regolabile








VASO combinato Wc/Bidet



MANIGLIONE fisso a parete

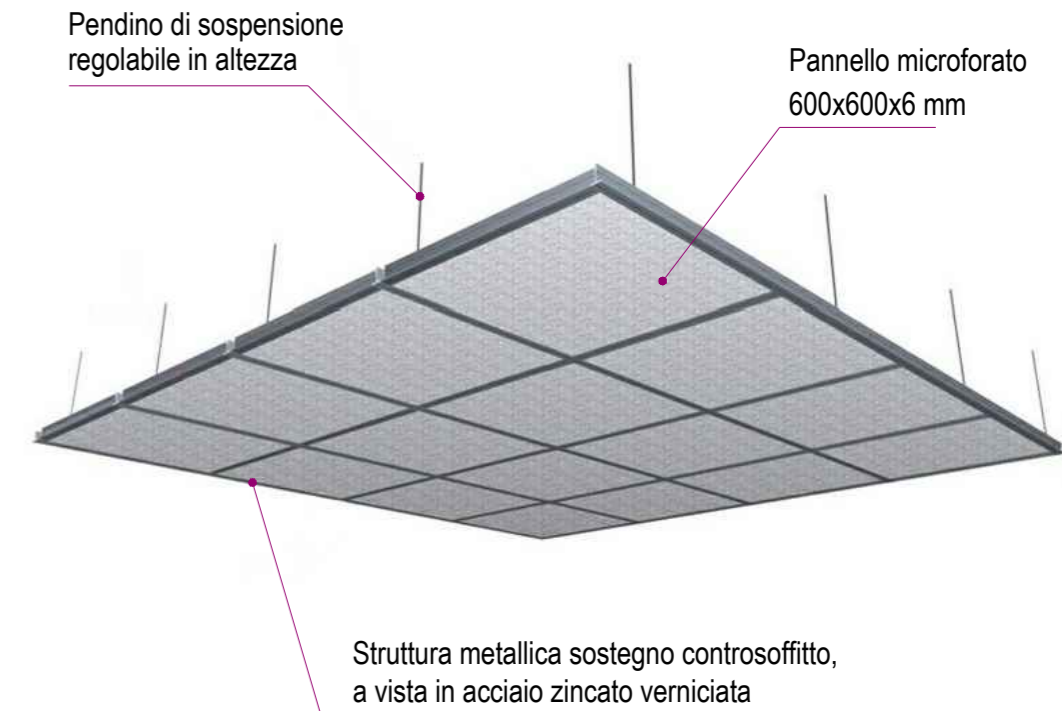


NUOVO W.C. DISABILI
(VEDI PARTICOLARE)

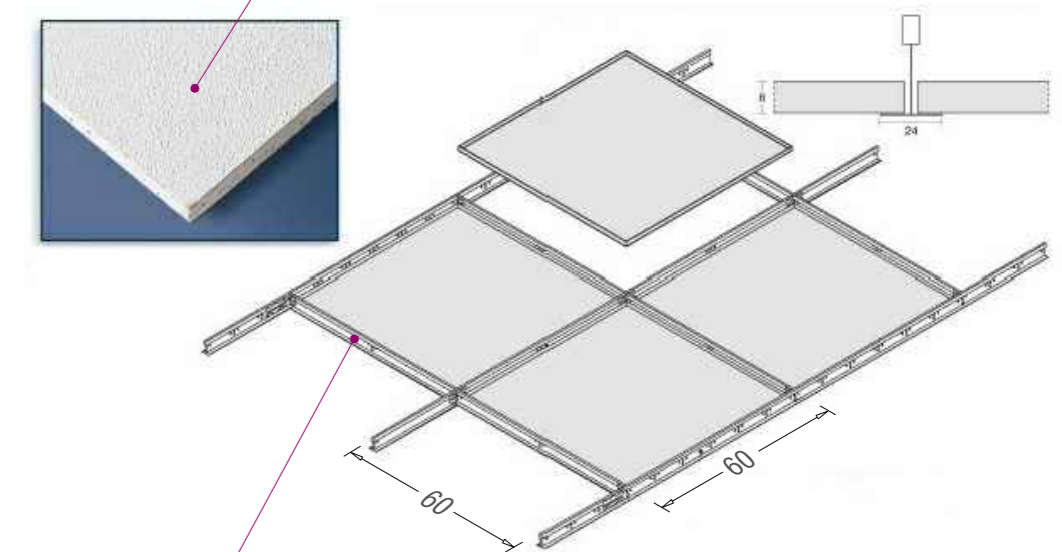
- | | |
|---|---------------------------------------|
|  | RICOSTRUZIONI |
|  | NUOVI SANITARI |
|  | RIFACIMENTO DEI SERVIZI IGIENICI |
|  | NUOVO CONTROSOFFITTO |
|  | NUOVA PAVIMENTAZIONE E CONTROSOFFITTO |

Opere INTERNE

PARTICOLARI STRUTTURALI CONTROSOFFITTO



Pannello microforato 600x600x6 mm



Profilo a "T" e coprifilo perimetrale a "L"
delle dimensioni minime di 24x24 mm